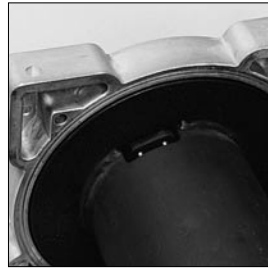


Optional equipments for TRB



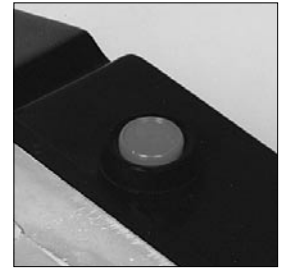
Electronic load limiter
This well-proven device will safely stop the winch in the event of an overload.



Lengthened drum



Radio control
A radiocontrol is available, taking precautions.



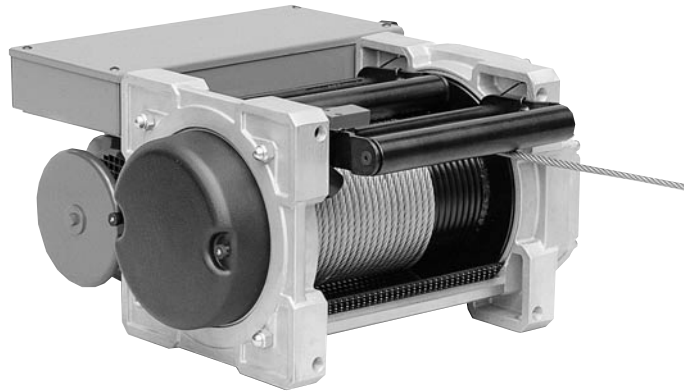
Thermal circuit breaker
With reset button. Protects the motor.

Motors

For specific uses, different models are offered:

- Single-phased:
110-220 volts
50 or 60 Hz
- Three-phased:
380-440-660 volts
50 or 60 Hz
750-1000-3000 rpm

Special protections on request.



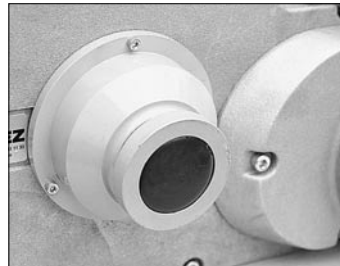
Back-up hand wheel (up to 350 kg models)

A back-up hand wheel, connected to a brake release lever, can be used to lower or position a load with the power off.



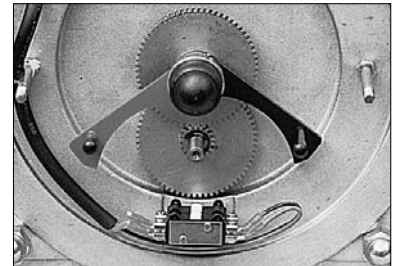
Releasable drum (500-960 kg)

Particularly useful for no-load paying-out of rope over long distances.



Limit switch

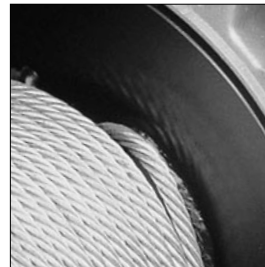
Ensure safe operation by preventing travel beyond the upper and lower limits.



Rope press roller
It is the necessary supplement to the grooved drum, when the rope is not continuously taut.



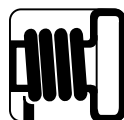
Grooved drum
Facilitates correct winding of the first rope layer. Essential for a two-way system.



Second rope fastener
For lifting a load using two ropes or implementing a two-way system.



Rope slack switch
This device automatically stops the winch when the rope is not taut.



treuils
HUCHEZ

60420 Ferrières (Oise) - France
Tel. +33 344 511 133 - Fax +33 344 511 513

www.huchez.fr